



Journey through the Valley of Stone

... a living history



You are here: The Journey > Stone in the landscape > Stone in the countryside

Stone in the countryside



Superb flag fencing criss crossing the landscape at Back Cowlm, Whitworth



Large scale flag fencing adjacent to Lee Quarry tramway.



Even flagstones with flag buttresses at Hud Clough, Whitworth



Journey through the Valley of Stone

... a living history



Double row of flag fencing at Back Cwm Farm

[click to enlarge](#)



Stepped profile flag fence at Cock Hall, Whitworth

[click to enlarge](#)



Unusual flag fence sheep fold at Back Cwm, Whitworth

[click to enlarge](#)



Journey through the Valley of Stone

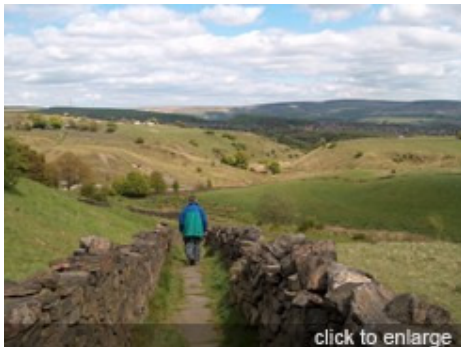
... a living history



Flag fence modified to farm porch Moss Meadows Farm, Stacksteads



High quality stepped waterboard walling. Spring Mill, Whitworth



Dry stone wall 'corridor' plus flag causey, Healey Stones, Healey



Wall with flag stone over sheep creep, Bacup Old Rd



Journey through the Valley of Stone

... a living history



Grade II listed circular tree guard, later sheep pen, Cow Toot, Bacup

[click to enlarge](#)



T shaped wall pattern for sheep shelter near Plunge, Edenfield

[click to enlarge](#)



Quarryman's hut with stone cupboards and chimney, Cragg Quarry

[click to enlarge](#)



Quarryman's hut with more complex entrance, Ab Top Quarry

[click to enlarge](#)



Journey through the Valley of Stone

... a living history



Stacked grey (stone) slates with peg holes, Halsingden Grane

[click to enlarge](#)



Large flagstone roof near Thimble Hall, Watergrove

[click to enlarge](#)



Gate post and ruins at Causeway Head, Musbury Valley

[click to enlarge](#)



Journey through the Valley of Stone

... a living history



Strong ripple marks in gate post, Grove Head, Grane Valley

[click to enlarge](#)



Distinct stone row - 'a stretcher gate' for drying warp, Thimble Hall, Watergrove

[click to enlarge](#)



A junction of 2 sets of stone causeys some ruttred by early stone truck, Rooley Moor Rd, Cowpe



Journey through the Valley of Stone

... a living history



Old causeys clearly rutted by stone trucks, Cowclough Rake, Cowm

[click to enlarge](#)



Eye catching bridge over Old Lane, purpose unknown, Cow Toot, Bacup

[click to enlarge](#)



Flag stone spans and support on clapper bridge at Hippins, Waterfoot

[click to enlarge](#)



Flag stone parapets on bridge over River Ogden, Irwell Vale

[click to enlarge](#)



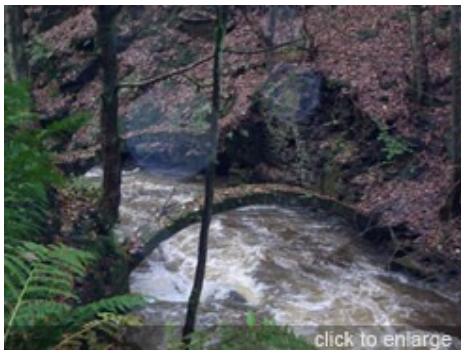
Journey through the Valley of Stone

... a living history



Turnpike road bridge over early pack horse bridge at Ewood Bridge

[click to enlarge](#)



Bridges as only remains of fulling mill in Healey Dell Whitworth

[click to enlarge](#)



Early chimneys - the transition from water to steam power, Bridge Clough, Waterfoot

[click to enlarge](#)



Detached chimney above Greenbridge Works, Rawtenstall. The flue up the hillside gains height to the chimney

[click to enlarge](#)



Journey through the Valley of Stone

... a living history



Primitive use of stone to create a grate, Hud Clough,
Whitworth

[click to enlarge](#)



Hand carved manhole cover in flagstone, Alder Bottom,
Edenfield

[click to enlarge](#)



Waugh's Well on the moorlands above Edenfield. The
late John Taylor organising an annual pilgrimage.

[click to enlarge](#)



'Spewing Duck' well at Goodshaw Fold, the trough is
created by flagstone slabs

[click to enlarge](#)



Journey through the
Valley of Stone
... a living history



Large hand carved stone trough, New Hall Hey.
Rawtenstall.

[click to enlarge](#)